

LED CONTROLLER

User Manual



Before you use the LED controller, please
read this file first and save it for future

We will struggle and serve for the booming development of LED industry!

BX-VMF Multi function controller

Statement

Any companies or privates cannot copy, transcribe or translate part or whole content of this file without our written permission. And cannot use it on any business or benefit filed with any forms.

The specifications and information which are mentioned on the file is for reference only, if there's update, we will not inform you. This file is only for guidance, and all information will not be for any promises.

CATALOG

Brief Introduction.....	1
About Software.....	1
Characteristics.....	1
Guiding.....	2
Safety Notes.....	2
Function instruction.....	3
Multichannel relay interface.....	3
Multi sensor interface.....	3
Technical specifications.....	4
Physical dimension.....	5
Interface illustration.....	6

Brief Introduction

Thanks for ordering LED control card. The design of the control card is according to the international and industrial standard, but if the operations are incorrect, it will probably bring you personal injury and financial harm. As to avoid these and win more from your equipment, please obey the specifications of this file.

About Software

Cannot do any modification, decompilation, disassembling, decoding or reverse engineering on our software, it's illegal.

Characteristics

- ◆ Simple structure, easy installation
- ◆ Gigabit network receiving card mode, match with sending card&sending box mode
- ◆ High refresh technology, more abundant display effects, pursuit more technological innovation and many details were increased ;
- ◆ The product has more obvious advantages to meet the diverse needs of users
- ◆ The most we think about is the convenience for customers. Easy to operate and install, no need for training.
- ◆ Match with BX-V series product, support audio, multi channel temperatures, smoke and brightness, support multi way switch: limit temperature for air conditioning, fan dehumidification, big screen power supply, etc. User can configurate it according to different requirement.
- ◆ Suit for All kinds of full color LED screen

Guiding

Safety Notes

- ◆ Input voltage is 5V, voltage range is from 4.5V-6.5V, please make sure the quality of the power supply of BX-VMF.
- ◆ Please make sure that all the power supply cables are plugged off when you want to connect or plug off any signal or controlling cables.
- ◆ Please make sure that all the power supply cables and signal cables are plugged off when you need to put in or take off the hardware equipment.
- ◆ Please take off the power supply of LED video processor before you do any hardware operations, and ESD by touching the ground.
- ◆ Please make sure the environment is clean, dry and ventilated when you use this product, also, do not put this product to a high temperature and wet environment.
- ◆ This product is electronic products, please keep away from fire, water source and flammable&combustible products.
- ◆ There's high pressure components in this products, please do not open the box and repair it by yourself.
- ◆ Turn off the power supply immediately when you find smoking, peculiar smell or something unusual. And contact with us soon.

Function instruction

BX-VMF multi-function card is matched with BX-V series synchronous sending card, sending box, YQ series multi media player and Gigabit Ethernet mode . The product matches the Gigabit network receiving card mode and is suitable for all kinds of specifications of the full color LED display. It can realize the environment monitor and manage the LED screen. The product is simple in structure and easy to install. The best effect can be achieved without training of the users.

BX-VMF multi-function card hardware system can be upgraded online, to maximize the protection of the benefits of users. Match with BX-VS series synchronous products, support sound transmission, support multi-channel temperature and humidity, smoke and brightness sensor collection. At the same time, it supports multi-channel automatic switch: air conditioner temperature limit, fan dehumidification, large screen power supply and so on, users can configure flexibly according to their needs. The product is simple and easy to install. The BX-VMF multi-function card hardware system can be upgraded online, and the benefit of the user is maximum guaranteed .

Multichannel relay interface

BX-VMF multi function card has 8 nos relay switch, each relay switch supports AC 220V-3A input control or DC 30V-3A input control. It can be used to control LED screen power supply, fan and so on. Support custom each relay switch function , remote command switch or automatic switch according to temperature strategy. Each relay switch is enabled to delay the power on by default, which reduces the impact of the power supply of the LED screen, and increases the reliability of the whole system and the power safety of the device.

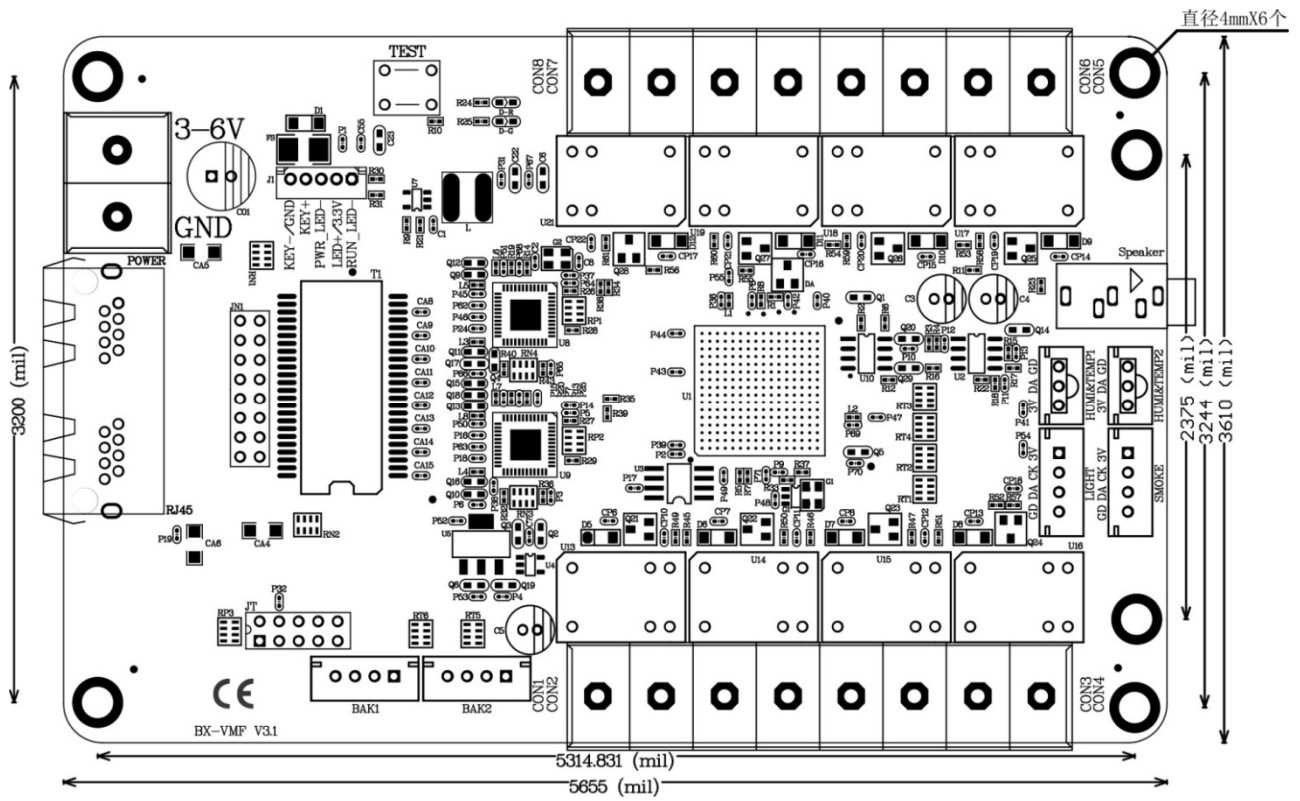
Multi sensor interface

BX-VMF was integrated 2 nos temperature sensor and temperature & humidity sensor interface, 1 nos brightness interface , 1 nos smoke sensor interface, 4 nos custom IO interface. One it is configured the temperature, temperature & humidity sensor , the designated relay can be automatically controlled. The brightness sensor interface work together with the sending end ,can automatic change the brightness of the LED screen.

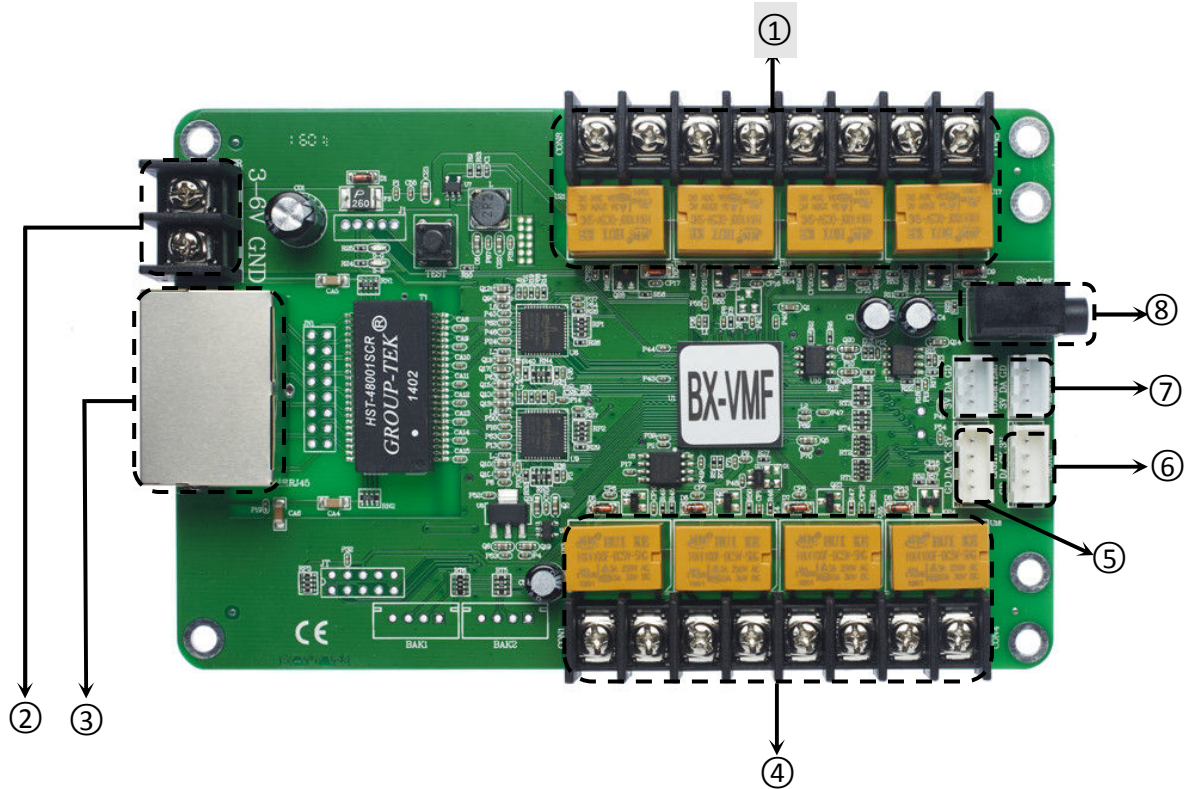
Technical specifications

Specification	
Working voltage	4.5V~5.5V; Please be sure the good quality of power
Power consumption	$\leq 4W$
Working temperature	-40°C ~ 80°C
Shape	56.6mm ϕ 36.1mm

Physical dimension



Interface illustration



Button description		
1	4 nos replay switch	From left→right: Air conditioner switch J8、 Air conditioner switch J7、 Fan switch J6、 Fan switch J5
2	Power terminal	5V Power interface, DC voltage input, rated voltage 5V, support 4.5V ~ 5.5V
3	1000M	Gigabit ethernet port, connected with send card
4	4 nos relay switch	From left→Right: Screen Switch J1、 Screen witch J2、 Screen Switch J3、 Screen Switch J4
5	Brightness sensor interface	Connected with brightness sensor
6	Smoke sensor interface	Connected with Smoke sensor
7	Temperature and Humidity sensor	From left→Right: Temperature and Humidity sensor interface 1、 Temperature and Humidity sensor 2
8	Aduio interface	Audio output, 1 nos 3.5 millimeter stereo sound

Contact Us

Shanghai ONBON Technology Co.,Ltd (Headquarters)

Address: 7 Floor, Tower 88, 1199#, North Qinzhou Road, Xuhui District, Shanghai City, China

Tel Phone: 086-21-64955136

Fax: 086-21-64955136

Website: www.onbonbx.com

ONBON (Jiangsu) Optoelectronic Industrial Co.,LTD

Address: 1299#, Fuchun Jiang Road, Kunshan City, Jiangsu Province, China

Sales Contacts

Tel: 0086-15921814956 0086-15800379719

Email: onbon@onbonbx.com

Second Development

Tel: 0512-66589212

Email: dev@onbonbx.com

iLEDCloud

Website: <http://www.iledcloud.com/>

